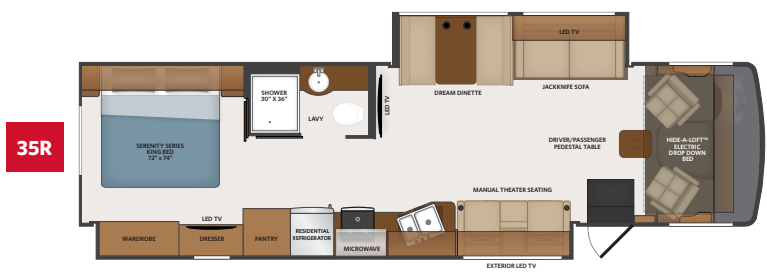
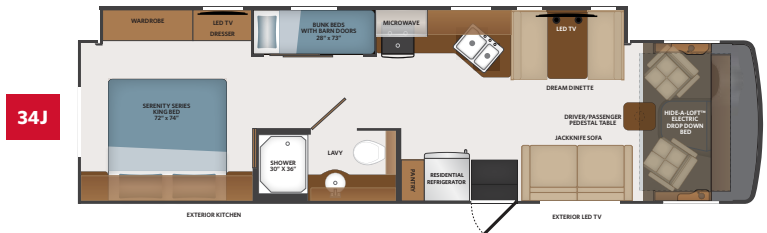
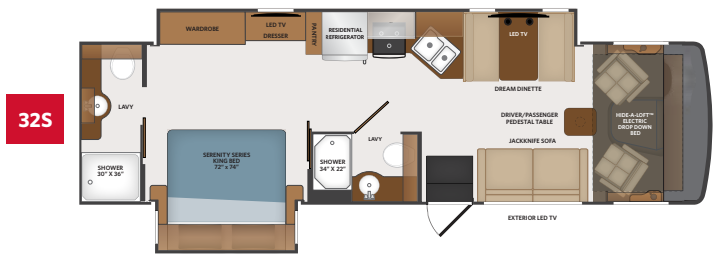




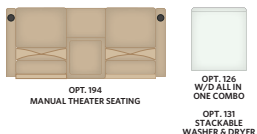
TOP FEATURES

- Ford 7.3L V8. (335 HP, 468ft.lb.)
- 22,000 pound chassis
- One piece fiberglass rear cap
- Standard full body paint
- 8,000 lb. tow hitch
- Pre wired for solar panel
- Wifi Ranger comes standard boosting any existing wifi signal
- Safe-T-View camera display (optional)
- Side-View camera integrated into exterior mirrors
- MultiPlex house controls that can be controlled by your smart phone or tablet
- Tarkett interlocking composite flooring
- Hide-A-Loft™ electric drop down bed (standard)
- Dash stereo with Apple CarPlay, Android Auto, and tilt screen
- No luan backer on fiberglass sidewall reducing the possibility of delamination
- Large one piece panoramic windshield



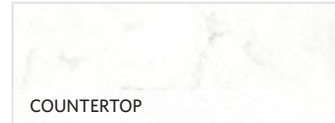
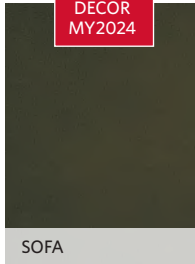
AVAILABLE OPTIONS

- Double Door Dometic 8 cu. Ft<sup>3</sup> LP Refrigerator
- Washer / Dryer All-In-One Combo (35R)
- Stackable Washer & Dryer (35R)
- Manual Theater Seating (32S & 34J)
- Collision Mitigation
- Power Driver's Seat
- King Stationary Satellite Universal System
- Safe-T-View
- Roof Vent Covers
- Steering Stabilizer System



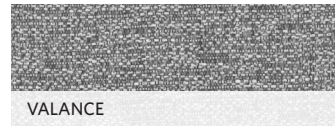
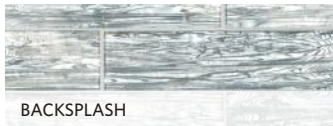
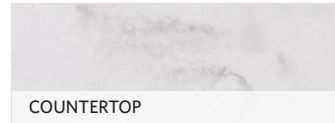
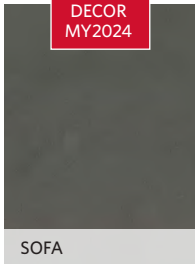
COCOA SHIMMER

NEW DECOR MY2024



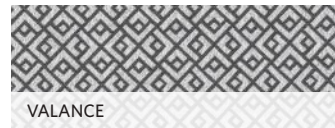
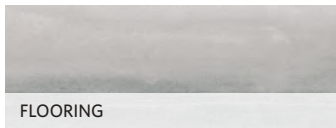
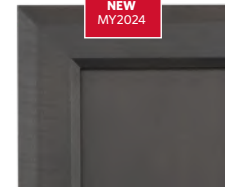
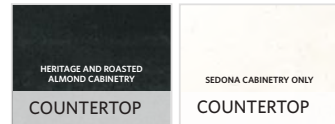
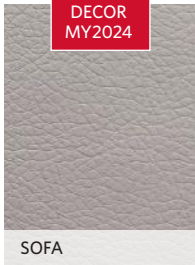
MOUNTAIN PASS

NEW DECOR MY2024



STONE WALL

NEW DECOR MY2024



**NEW CABINETS  
DOOR PROFILES FOR  
MODEL YEAR 2024**

CHASSIS

MODEL	32S	34J	35R
Wheelbase	208"	228"	228"
Front GAWR (lbs)	8,000	8,000	8,000
Rear GAWR (lbs)	15,000	15,000	15,000
GCWR (lbs)	26,000	26,000	26,000
Hitch Rating Weight (lbs)	8,000	8,000	8,000
Tongue Weight (lbs)	800	800	800
Fuel Capacity (gal)	80	80	80

DIMENSIONS & CAPACITIES

MODEL	32S	34J	35R
Overall Length	33' 6"	36' 0"	36' 0"
Overall Height	12' 4"	12' 4"	12' 4"
Overall Width*	100"	100"	100"
Interior Height*	82"	82"	82"
Interior Width*	96"	96"	96"
Patio Awning Width	14'	22'	18'
Interior Storage (cu. ft.)	97	110	130
Exterior Storage (cu. ft.)	83	82	160
Fresh Water Capacity (gal)	50	50	50
Grey Water Capacity (gal)	74	37	37
Black Water (gal)	37	37	37

\*Overall Width, Interior Height and Interior Width measured with slide-box in.

FORD® CHASSIS



Model: Ford®  
 Engine: 7.3L Triton V8  
 Transmission: Ford® 6-Speed, Automatic w/Overdrive  
 Alternator: 210 Amp  
 Torque: 468 lb.-ft. @ 3,750 RPM  
 Horsepower: 335HP @ 3,750 RPM

EXTERIORS



NEW EXTERIOR MY2024

